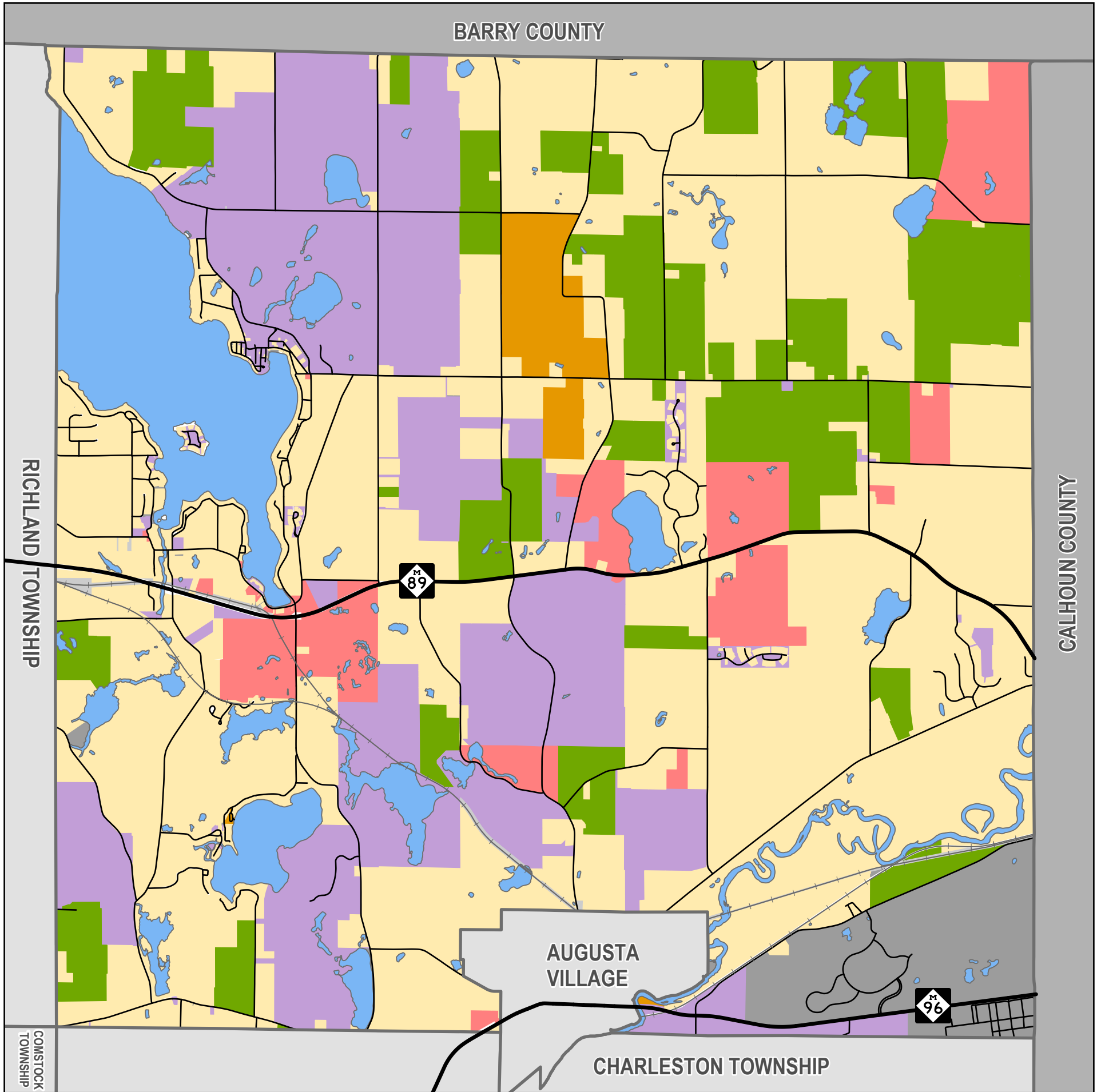


Existing Land Use

Ross Township, Kalamazoo County

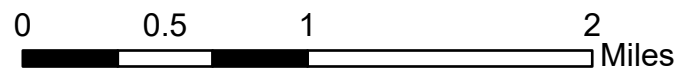


Legend

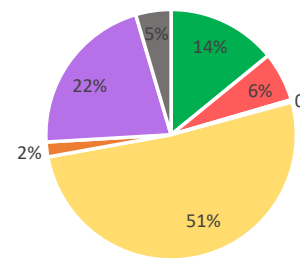
- Railroads
- State Highways
- Local Roads
- Township Boundaries
- County Boundaries
- Lakes

Land Use by Property Class

- Agricultural - 2902.99 Acres
- Commercial - 1309.99 Acres
- Industrial - 64.29 Acres
- Residential - 10559.16 Acres
- Other Uses - 393.49 Acres
- Tax-Exempt - 4394.37 Acres
- Unknown/No Data - 938.17



Percentage of Classification Coverage



- Agricultural
- Commercial
- Industrial
- Residential
- Other Uses
- Tax-Exempt
- Unkown/No Data

