

A construction worker wearing a blue hard hat and a high-visibility safety vest is working on a large pipe in a trench. The worker is looking down at the pipe. The background shows a large pile of dirt and a blue level tool on the left side of the trench.

THE CITY OF



# Ross Township Board Meeting Kalamazoo Municipal Water Extension Alternative

Tuesday, October 15, 2024



# Agenda

Introduction

34<sup>th</sup> Street Production Plated Plastics

Investigation Summary

Michigan Drinking Water Criteria  
(PFAS)

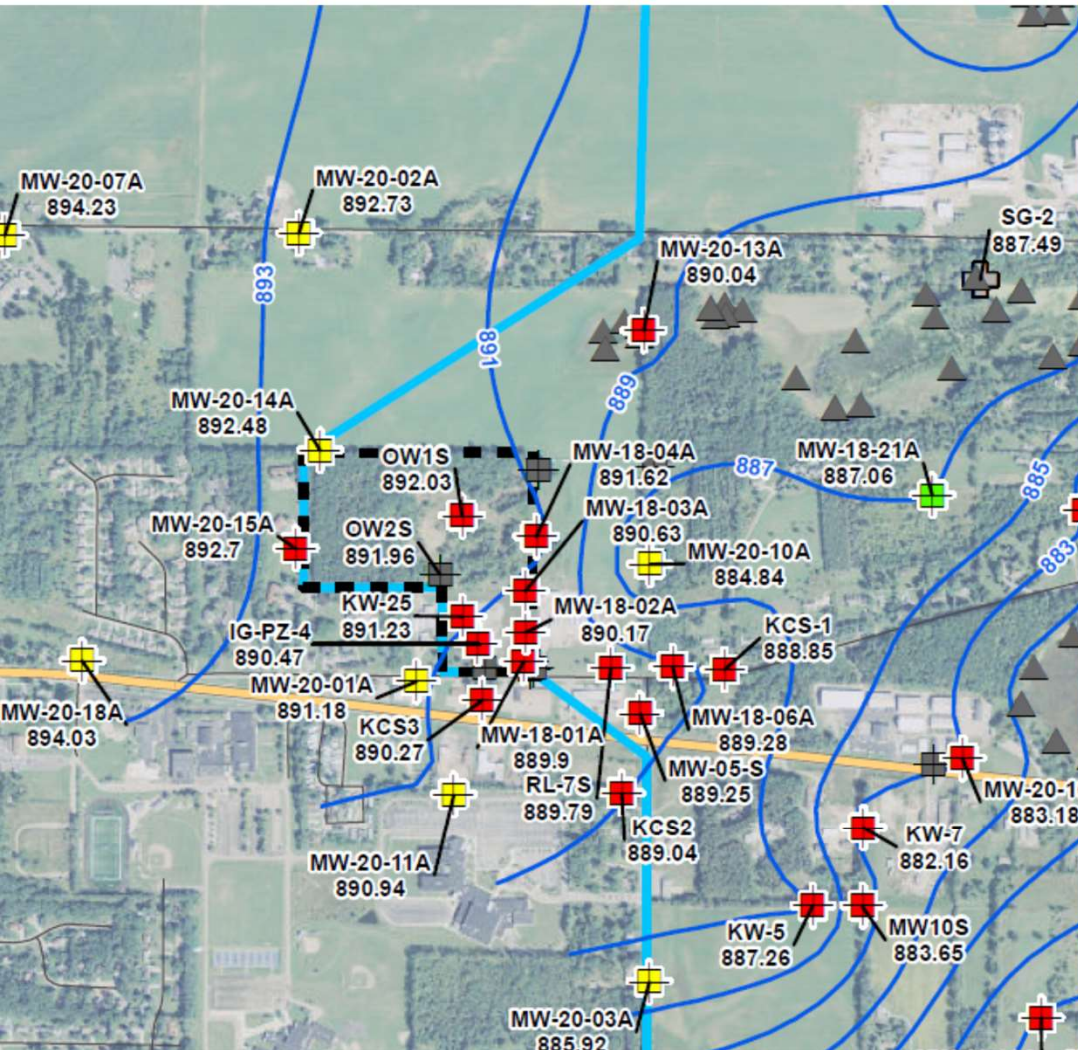
Monitoring Well Sampling Trends

Long Term Drinking Water  
Recommendations

Proposed Alternative, Kalamazoo  
Municipal Water Extensions







# 34<sup>th</sup> Street Production Plated Plastics

Plastics Plating Company 1966-1991

Previously discovered contamination; heavy metals, chlorinated volatile organic compounds

Chromium 6 and nickel were discovered to have migrated from the site in 1988

PFAS discovered in the groundwater extraction system in 2018

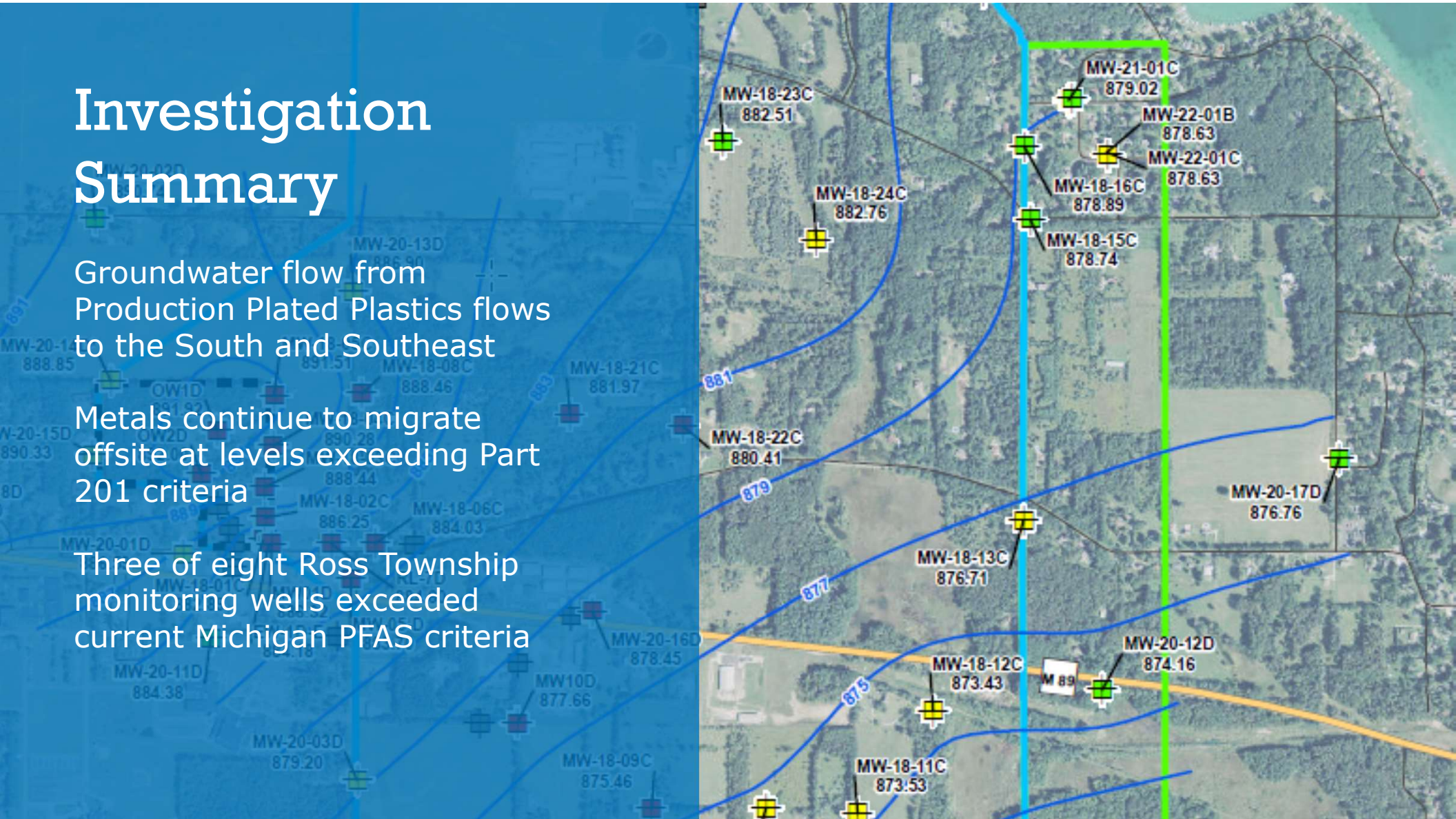


# Investigation Summary

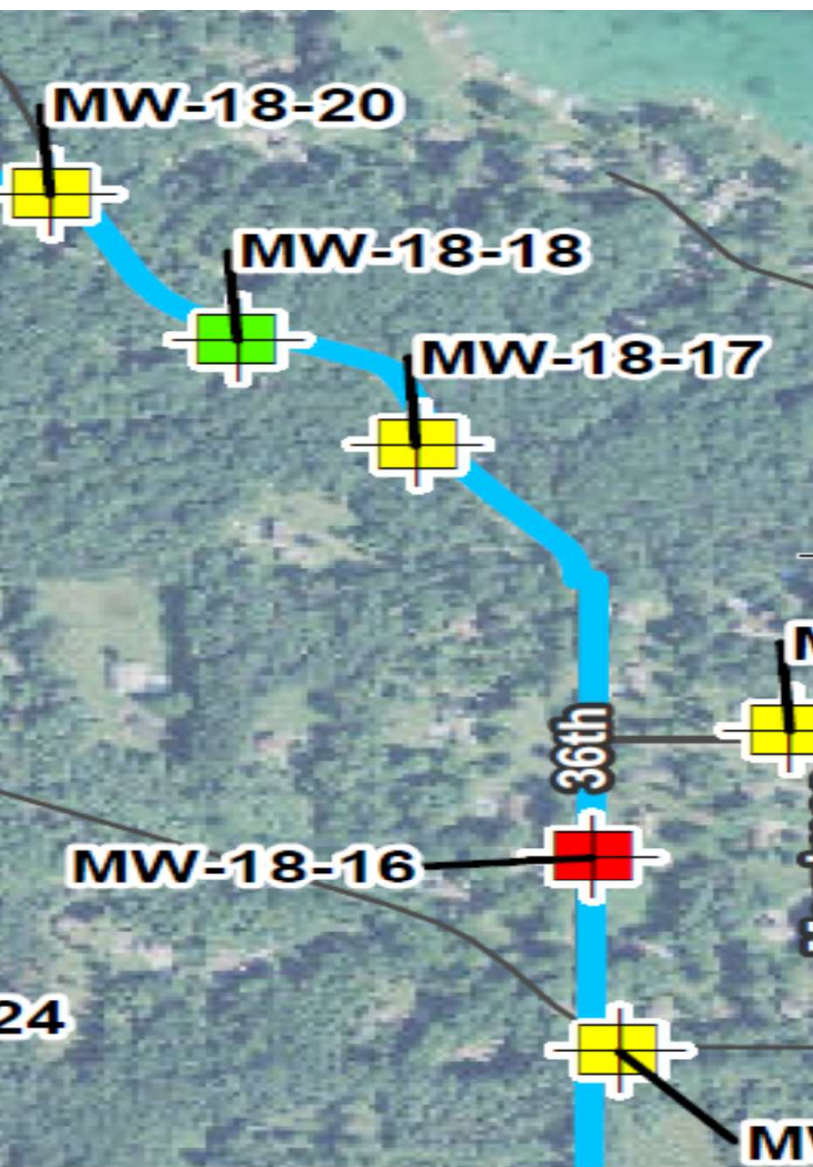
Groundwater flow from Production Plated Plastics flows to the South and Southeast

Metals continue to migrate offsite at levels exceeding Part 201 criteria

Three of eight Ross Township monitoring wells exceeded current Michigan PFAS criteria







Specific PFAS	Michigan MCL	Michigan GSIC	Specific Monitoring Well			
			MW-18-15	MW-18-16	MW-21-01	MW-22-01
PFNA	6	N/A	ND	1.2	1.28	1.5
PFOA	8	12,000	2.5	13.1	4	8.68
PFHxA	400,000	N/A	0.85	8.61	4.1	4.9
PFOS	16	12	2.6	58	13.2	2.05
PFHxS	51	N/A	5.91	12.7	2.03	1.1
PFBS	420	N/A	34.1	14.4	18.3	2.44
HFPO-DA	370	N/A	NS	NS	NS	NS





# Long Term Drinking Water Recommendations

Specific locations may need to consider future long-term plans for clean safe drinking water alternative sources

Looping from Richland Township into Ross Township and back into Richland Township will benefit the Water System at large





# Proposed Alternative, Kalamazoo Regional Water System Expansion

Previous Kalamazoo municipal extensions successful in solving PFAS contamination in Parchment, Cooper Township and Richland Township

Funding programs available

Parchment, Cooper Township and Richland Township extensions connected over 1700 customer locations at no direct customer cost



# Proposed Alternative, Kalamazoo Regional Water System Expansion

Ross Township water main extensions focused within near and known PFAS investigation areas

Transmission main (red) and distribution main (blue) to serve the Gull Vista Plat and the Indian Point Plat

Fire hydrants and available fire protection provides an additional benefit and likely reduction in homeowners insurance rates

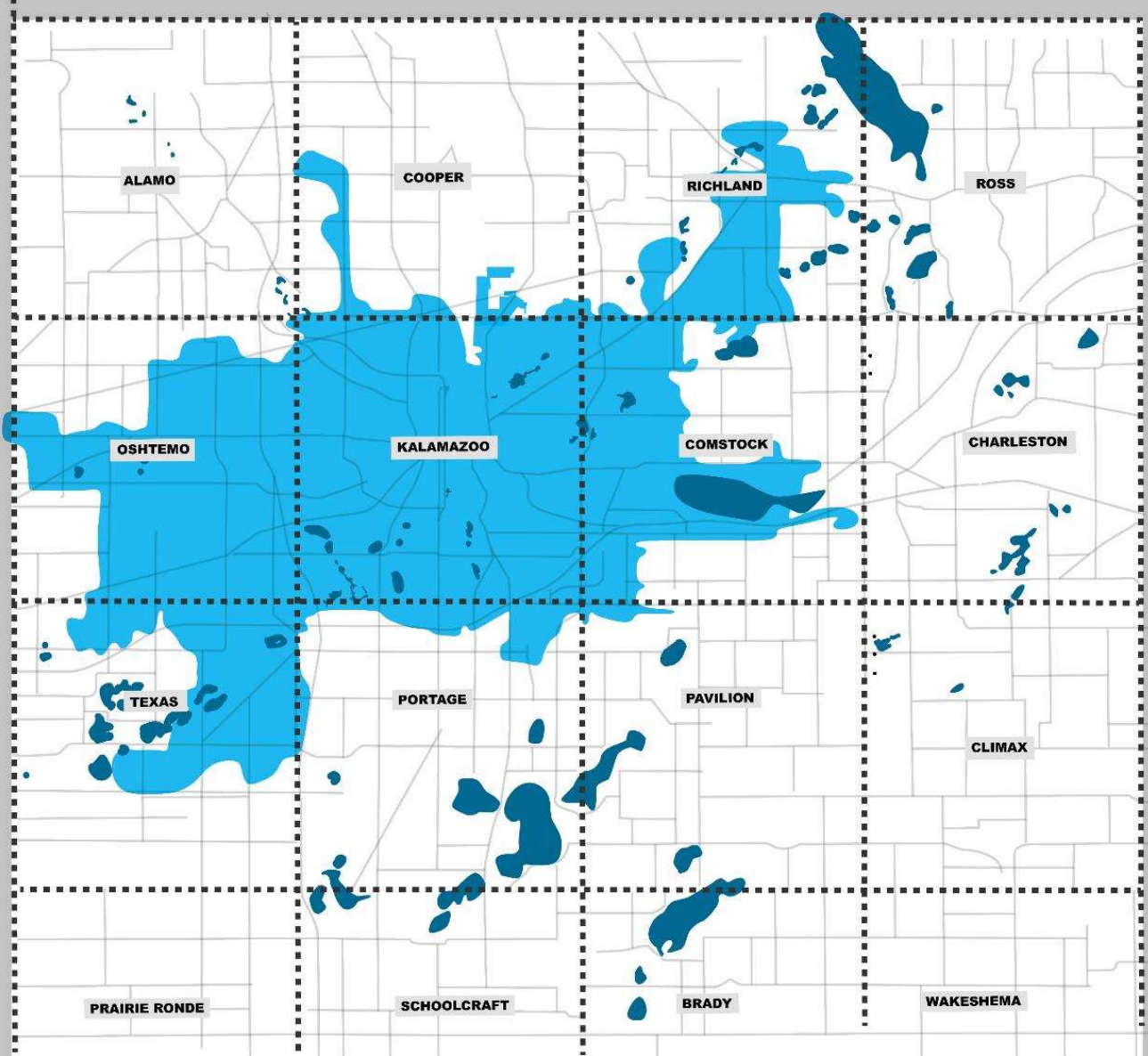




# **Kalamazoo Regional Water System**



# Kalamazoo Water system





# Michigan's largest groundwater-only water supply

- 41,669 connections
- 839 miles of water main
- 7,000 fire hydrants
- 11 elevated storage facilities
- 11 municipal jurisdictions
- 20 booster/bleeder stations
- 13 point of entry treatment plants
- 94 production wells
- 16 US Geological Survey gauge stations
- 38 million gallons per day average max demand
- 46 million gallons per day max demand (1988)
- 11 municipal jurisdictions represented by 7 voting members to determine Policy and Rates - UPC



# DWSRF FY2025 and UPC Approvals

\$110 million to support drinking water projects in Kalamazoo

New consolidated treatment plants (Sta.5 and Sta. 14) to remove iron, manganese, and PFAS

Lead service line replacements in the City of Kalamazoo

Richland Township extensions of the public water supply

Ross Township extensions of the public water supply





# DWSRF FY2025 and UPC Approvals

Ross & Richland Township extensions of the public water supply

Voluntary connections

No cost to adjacent property owners to connect where a home or business is constructed prior to 12-31-2025, now through 12-31-2030

Well permitted abandonment covered with the connection at no cost

Well retention may be allowed in accordance with City of Kalamazoo policy if approved by EGLE and Health Department





## Next steps

The City of Kalamazoo and Ross Township will need to enter into a Water Services Agreement

Design engineering needs to begin in both Ross & Richland Townships in ROW areas along public roadways

Future Board meetings (TBD) to discuss what to expect during construction and how to volunteer to connect



# Discussion